



Designer Showcase II

Pattern Name	Fabric Content	Ends / Picks	Weight per lin yd	Roll Size / Width	Flammability Tests ¹	Cleaning Code
Axis	56% Post Industrial Recycled Polyester 44% Post Consumer Recycled Polyester	145 / 34	10.0 oz.	50 yds. 66" wide	ASTM E-84 Cal. TB 117-2013 NFPA 260 / UFAC	W-S
Cusp	58% Post Industrial Recycled Polyester 32% Post Consumer Recycled Polyester 10% Polyester	145 / 36	10.9 oz.	50 yds. 66" wide	ASTM E-84 Cal. TB 117-2013 NFPA 260 / UFAC	W-S
Hinge	43% Post Industrial Recycled Polyester 34% Polyester 23% Post Consumer Recycled Polyester	145 / 34	11.5 oz.	50 yds. 66" wide	ASTM E-84 Cal. TB 117-2013 NFPA 260 / UFAC	W-S
Tier	57% Polyester 28% Post Industrial Recycled Polyester 15% Post Consumer Recycled Polyester	145 / 31	13.9 oz.	50 yds. 66" wide	ASTM E-84 Cal. TB 117-2013 NFPA 260 / UFAC	W-S

Additional Information

All patterns in this collection **meet or exceed** ACT[®] Performance Guidelines.



*ACT[®] Registered Certification Marks

Dye lots may vary from samples shown.
Final determination of the suitability of this product for an application rests with the user.

¹Flammability: This term and any corresponding data refer to the typical performance in the specific tests indicated and should not be construed to imply the behavior of this or any other material under actual fire conditions.

Proposition 65 Warning: This product may contain chemicals known to the State of California to cause cancer, birth defects and other reproductive harm.

UL Recognized Component

All patterns in this collection can be applied without need for further testing to any office panel system which has been authorized for use with fabrics included in UL's Fabric Recognition Program.

Earth Friendly

All patterns in this collection are part of the Earth Friendly Collection. Burch's Earth Friendly Collection provides fabric options for reducing a negative impact on the environment.

Directional Fabric

All patterns in this collection are directional fabrics. Please use caution when cutting and applying.

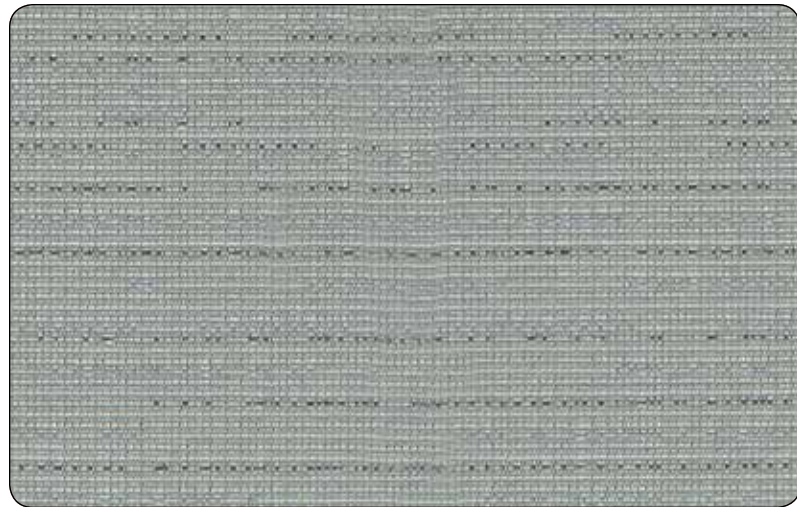


Designer Showcase II

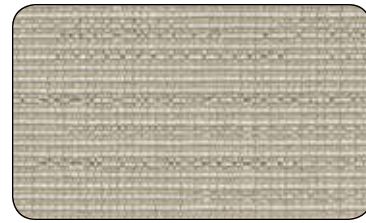


1.800.817.1187 conklinoffice.com

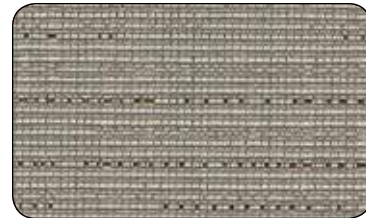
Axis



1009361 Chambray



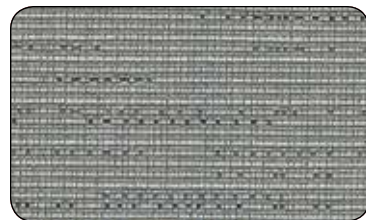
1009359 Dune



1009363 Fossil



1009360 Silver

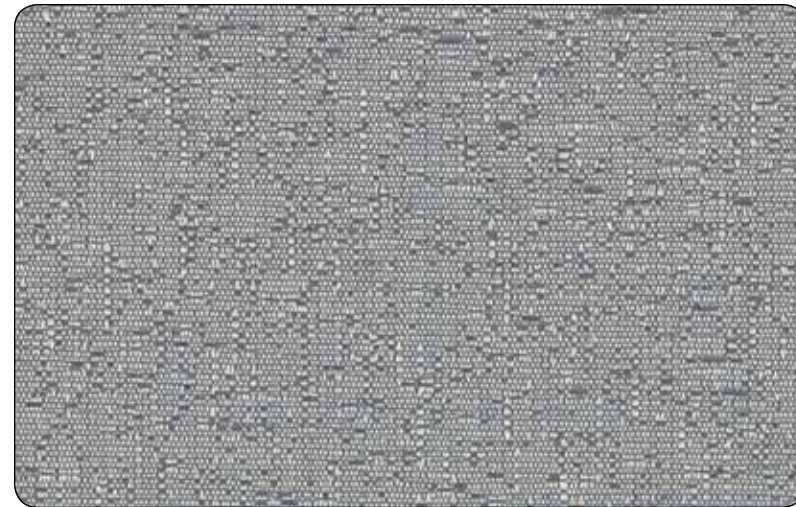


1009362 Bluestone



1009364 Sepia

Hinge



1009376 Azure



1009371 Pearl



1009372 Ecru



1009373 Earl Grey

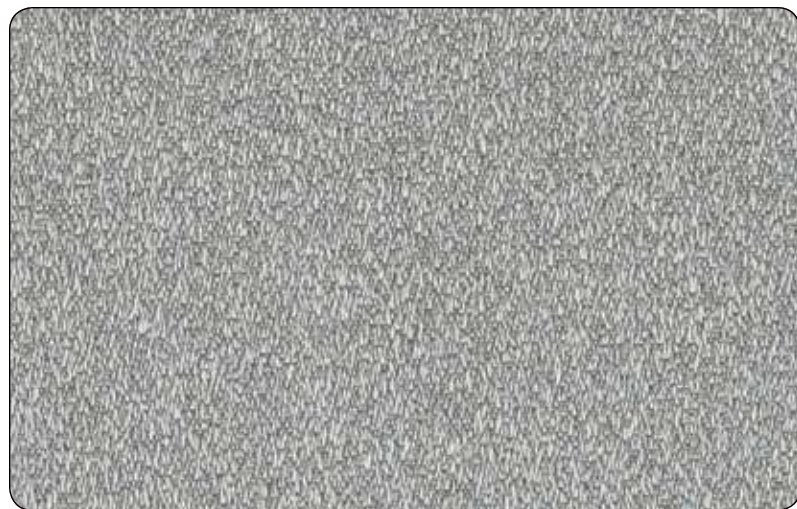


1009375 Shale



1009374 Mink

Cusp



1009367 Oasis

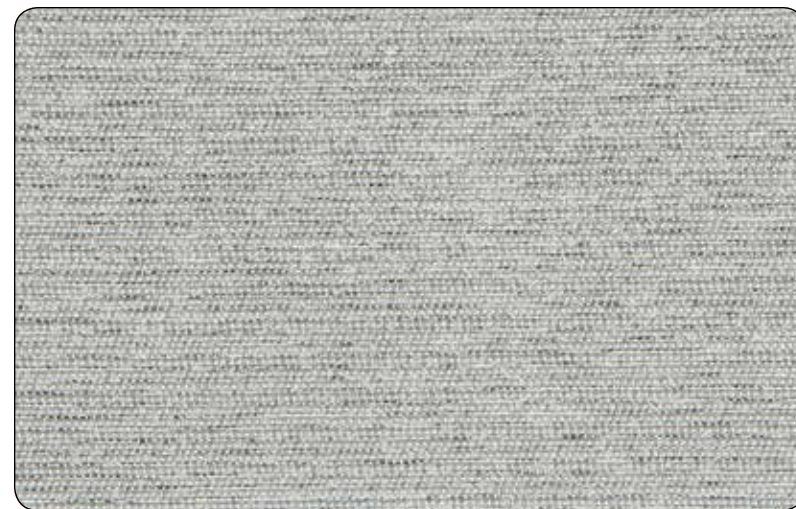


1009365 Putty



1009366 Fawn

Tier



1009378 Rain



1009382 Champagne



1009381 Chino



1009368 Concrete



1009369 Quarry



1009370 Mercury



1009377 Sterling



1009379 Stone



1009380 Ecru